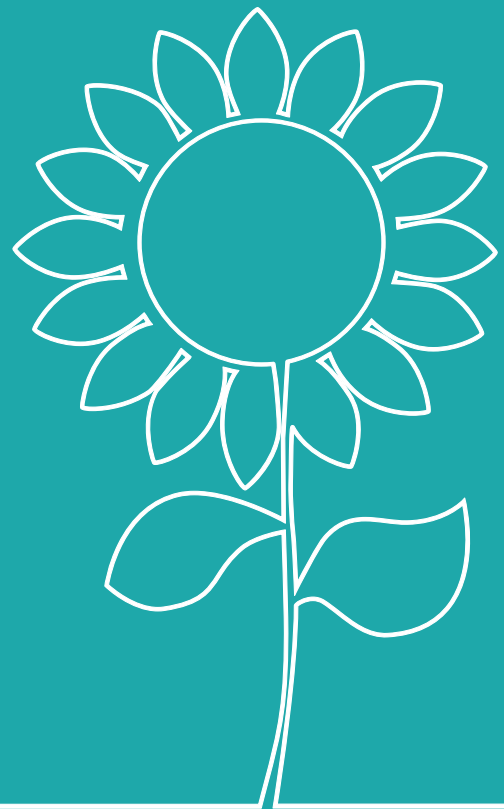


CHILD DEVELOPMENT AND HEALTH & SOCIAL CARE Teacher CPD

Regional venues • In-School



Over 5,000 teachers attended a
Hodder Education CPD course in 2018.
Join our community. Book your place today.

DISCOVER YOUR **20% DISCOUNT** INSIDE >

About Hodder Education



Hodder Education has been working with schools, colleges, expert authors and awarding organisations for many years to create quality print and digital resources and deliver exceptional teacher training and revision events.

We provide:

- Market-leading, award-winning resources for over 30 subjects, covering teaching, learning, CPD and revision
- Support for GCSE and A-level students with 16 Review Magazines across different subjects
- Innovative digital products, including eTextbooks, Teaching & Learning and Exam Question Practice resources, that work flexibly together
- Coverage for KS3, GCSE, IGCSE, IB and A-level and numerous vocational qualifications, supporting teaching and learning throughout the world



This course guide features all of our Health and Social Care CPD training events that will equip everyone with the skills required to progress and achieve success.

Save 20%

on all teacher workshops until
03/02/2019 – simply use discount
code WY0005335

*Terms and conditions apply. UK and European educational establishments only. Orders must be placed by 03/02/2019 using discount code WY0005335. This discount code is not valid in conjunction with any other offer and cannot be applied retrospectively. Discount only applies to Teacher Training days and excludes Teacher Webinars, Student Webinars and Conferences.

How we can help

We know that every classroom need is different, which is why we currently offer a range of opportunities from face-to-face events and webinars to bespoke in-school training.

Face-to-face: Regional events

From Teacher Workshops to Student Conferences, our regional events cover the whole spectrum of teaching and learning, with ideas and resources that you and your students can use immediately.

Online: Teacher and student webinars

These interactive sessions are a cost-effective way of training, offering classroom-ready resources and 6 months access to the webinar recording, meaning you can view them on-demand as many times as you need.

IN-SCHOOL Bespoke training

Is there a CPD workshop that you wish to attend but find it a struggle to leave the classroom? Or is there a particular area you are looking for support with? Why not 'host' an event or a more tailored workshop at your school on a day that suits you and your colleagues.

None of the events in this brochure are official AQA events and therefore the views and messages shared are not representative of AQA. For more information about the specification and official events, please visit www.aqa.org.uk. If printed or digital copies of AQA material are required for any events, you will receive confirmation of what you need to bring prior to the event



Contents

Child Development

3-5

Health & Social Care

6-7

TEACHER WORKSHOP

Preparing for the Cambridge Nationals Level 1/2 Child Development exam

Course leader: Anita Hardy

Manchester: Thursday, 7 February 2019

Central London: Tuesday, 12 February 2019

Course fee: £249 +VAT

Booking Ref: CD070219 / CD120219

Join experienced course leader, Anita Hardy, at this one-day workshop to explore how you can help your students attain the maximum grades possible. Be guided through revision strategies and use exemplar materials to develop your understanding of what each band requirement is and how students can meet them.

- Build a clear understanding of what your students need to understand and revise to prepare them fully for the examination
- Improve the accuracy of your marking and boost confidence for delivering the more complex and challenging questions
- Gain ideas of how to support students across the different ability range.

Attend this course and receive a free copy of Cambridge National Level 1/2 in Child Development – worth £21.99

CAMBRIDGE NATIONALS

LEVEL 1/2

10.00am	Registration and coffee
10.15am	Understanding the key sections of the examination content <ul style="list-style-type: none">• Overview of the paper and structure• Command verbs and their expectations• How to help your students answer different types of questions
11.15am	Morning coffee
11.30am	Exam assessment: 1, 2 and 4 mark questions <ul style="list-style-type: none">• The question requirements• Helping your students answer them successfully• Sample answers to see correct responses
12.30pm	Lunch
1.30pm	Exam assessment: Banded response questions <ul style="list-style-type: none">• What is required in the answers?• Review the different questions and successful responses• Sample answers showing the grade boundaries
2.30pm	Afternoon tea
2.45pm	Revision guide <ul style="list-style-type: none">• Revision techniques• Workshop using exam board question papers and mark schemes
3.45pm	Review and reflect
4.00pm	Course ends

Develop your delivery of the OCR Cambridge Nationals Level 1/2 Child Development

Course leader: Anita Hardy

Manchester: Friday, 1 March 2019

Central London: Tuesday, 5 March 2019

Course fee: £249 + VAT

Booking Ref: CD010319 / CD050319

Improve your delivery of the new specification and maximise students' grades by joining Anita Hardy on this development course. Gain an in-depth look at what the exam board requirements are and an understanding of the key subject matter that is required, including the depth and detail needed for each mark band.

This course clarifies your understanding of the internally assessed units R019 and R020, focusing on the parameters around the grading criteria grid. With the use of exemplar materials, you will have the opportunity to assess various criteria from both units and compare these to Pass, Merit and Distinction standards.

- Gain a clearer understanding of the assessment requirements to better prepare students of all abilities
- Boost your knowledge of the key subject matter that is required and the depth and detail for each mark band
- Explore exactly what your students need to produce to be successful

Attend this course and receive a free copy of Cambridge National Level 1/2 in Child Development worth £21.99

10.00am	Registration and coffee
10.15am	Understanding Unit R019 and the key issues <ul style="list-style-type: none"> • Requirements of Unit R019 and attainment for all abilities • The requirements for each mark band • How to deliver LO1 and LO2 concisely and successfully • Understand the requirements for the practical task • Completion of the witness statement
11.15am	Morning coffee
11.30am	Understanding Unit R020 and the key issues <ul style="list-style-type: none"> • Requirements of Unit R020 and attainment for all abilities • The requirements for each mark band • How to avoid the common pitfalls and misconceptions • Sample assessment materials at Pass/Merit/Distinction • Applying assessment criteria to exemplar – discussion
12.30pm	Lunch
1.30pm	Learning Objectives / Assessment Criteria <ul style="list-style-type: none"> • How to address LO1 and LO2 successfully • The importance of the initial visit and evidence required • How to plan successful activities and what to record • Sample assessment materials at Pass/Merit/Distinction • Applying assessment criteria to exemplar – discussion
2.30pm	Afternoon tea
2.45pm	Understanding Unit R018 and the key issues <ul style="list-style-type: none"> • Structure and content • Command verbs and types of questions • The question requirements – improving your understanding • Differentiation between the banded response questions • Resources and support
3.45pm	Review and reflect
4.00pm	Course ends

New to teaching Cambridge Nationals Level 1/2 Child Development

Course leader: Anita Hardy

Manchester: Thursday, 27 June 2019

London: Monday, 8 July 2019

Course fee: £249 +VAT

Booking Ref: CD270619 / CD080719

Whether your centre has delivered the GCSE Child Development or has started this qualification for the first time, this full day workshop will provide you with a detailed insight into this specification and the key differences. You'll be provided with strategies and tips that will enable you to deliver with confidence. It will also build your experience in applying the marking criteria to Units R019 and R020 at Pass, Merit and Distinction Levels.

- Gain an overview of the structure of the qualification and how to deliver with confidence
- Be provided with a clear understanding of the content of each of the three units of the specification
- Get to grips with the internal assessment and explore how to prepare candidates using the set Cambridge National assignments successfully

Attend this course and receive a free copy of Cambridge National Level 1/2 in Child Development worth £21.99

10.00am	Registration and coffee
10.10am	Overview <ul style="list-style-type: none"> • Key aspects of the content structure of the qualification • Overview of centre assessment units R019 and R020 • Assessment levels and administration
11.15am	Morning coffee
11.30am	Centre assessed task R019: Understanding the equipment and nutritional needs of children from birth to five years <ul style="list-style-type: none"> • How to deliver Unit 19 effectively, avoiding the pitfalls • Covering the content - practical ideas to use in the classroom • Apply the marking criteria to exemplar at Pass, Merit and Distinction levels
12.30pm	Lunch
1.30pm	Centre assessed task R020: Understanding the development of a child from birth to five years <ul style="list-style-type: none"> • How to deliver Unit 20 effectively, avoiding the pitfalls • Covering the content – practical ideas to use in the classroom • Apply the marking criteria to exemplar at Pass, Merit and Distinction levels
2.30pm	Afternoon tea
2.45pm	The examined unit R018: Health and well-being for child development <ul style="list-style-type: none"> • How to prepare your candidates for exam questions • Command verbs and expectations of answers • Revision techniques • Exemplar marking exercise
3.45pm	Review and reflect
4.00pm	Course ends

About our events

83% of the top performing centres delivering A-level have attended a Hodder Education event

Over **77%** of centres delivering A-level have attended a Hodder Education event in the last 18 months

On average, our summer 2018 workshops were rated **4.5/5** by teachers

The three most common words to describe our workshops are **fantastic, useful & great**

Supported over **20,000** students through their revision in 2018 with webinars and revision days

5,000 teachers attended more than one event in 2018 with Hodder Education

Develop your delivery of the OCR Cambridge Nationals Level 1/2 in Health and Social Care

Course leader: Anita Hardy

Manchester: Thursday, 28 February 2019

Central London: Monday, 4 March 2019

Course fee: £249 +VAT

Booking Ref: HSCO280219 / HSC040319

Clarify your understanding of the internally assessed units, both the mandatory R021 and R022, and the optional units R023 to R031. Focus will be on the parameters around the grading criteria grid. With the use of exemplar materials, you will have the opportunity to assess various criteria from both units and compare these to Pass, Merit and Distinction standards.

- Build a clearer understanding of the assessment requirements to better prepare students of all abilities
- Boost your knowledge of the key subject matter and the depth and detail that is required for each mark band
- Explore exactly what your students need to produce in order to be successful

Attend this course and receive a free copy of Cambridge National Level 1/2 Health and Social Care – worth £21.99

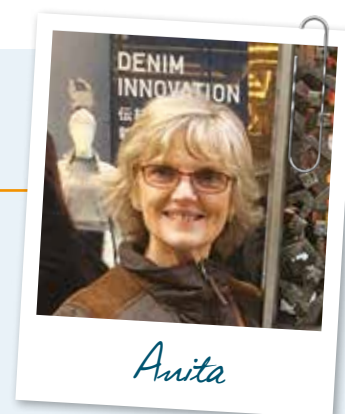
10.00am	Registration and coffee
10.15am	Understanding Unit R022 and the key issues <ul style="list-style-type: none"> • Requirements of Unit R022 and attainment for all abilities • The requirements for each mark band • How to deliver LO1 and LO2 concisely and successfully • Understand the requirements for the LO3 planning and carrying the interactions • Evidence and best practice when completing the witness statement
11.15am	Morning coffee
11.30am	Understanding the key factors of the Optional Units R023 to R031 <ul style="list-style-type: none"> • Requirements of Unit R020 and attainment for all abilities • The requirements for each mark band • How to avoid the common pitfalls and misconceptions
12.30pm	Lunch
1.30pm	Learning Objections/Assessment Criteria <ul style="list-style-type: none"> • How to address LO1 and LO2 successfully • The importance of the initial visit and evidence required • How to plan successful activities and what to record • Sample assessment materials at Pass/Merit/Distinction • Applying assessment criteria to exemplar – discussion
2.30pm	Afternoon tea
2.45pm	Understanding Unit R018 and the key issues <ul style="list-style-type: none"> • Structure and content • Command verbs and types of questions • The question requirements – improving your understanding • Differentiation between the banded response questions • Resources and support
3.45pm	Review and reflect
4.00pm	Course ends

Speaker spotlight: Anita Hardy

Anita is an Assistant Head Teacher in an academy and works for a major examination board. She is involved in both the moderated units and examination units as she has served as Senior Assessor for this qualification since its first year of entry.

“Anita is an excellent and caring lady who is patient and passionate about her job. The resources she provided will be very valuable as they provide an overview of the appropriate units and clarity of choices made. The day as a whole was very helpful and well organised.”

– Mrs Angie Miles, Benjamin Britten Music Academy



New to teaching the Cambridge Nationals Level 1/2 in Health and Social Care

Course leader: Anita Hardy

Central London: Tuesday, 2 July 2019

Course fee: £249 +VAT

Booking Ref: HSC020719

Improve your delivery of the new specification by joining Anita Hardy to gain an in-depth look at what the exam board requirements are to maximise your students' grades.

This course will clarify your understanding of internally assessed units, both the mandatory R021 and R022, and optional units R023 to R031. Focus will be on the parameters around the grading criteria grid. With the use of exemplar materials, delegates will have the opportunity to assess various criteria from both units and compare these to Pass, Merit and Distinction standards.

- Build a clearer understanding of the assessment requirements to better prepare student of all abilities
- Gain an understanding of the key subject matter and the depth and detail required for each mark band
- Explore exactly what your students need to produce in order to be successful

Attend this course and receive a free copy of Cambridge National Level 1/2 Health and Social Care – worth £21.99

PERFECT FOR THOSE NEW TO THE CAMBRIDGE NATIONALS LEVEL 1/2 QUALIFICATIONS, PLUS NEWLY QUALIFIED OR NON-SPECIALIST TEACHERS.

10.00am	Registration and coffee
10.15am	Understanding Unit R022 and the key issues <ul style="list-style-type: none"> • Requirements of Unit R022 and attainment for all abilities • The requirements for each mark band • How to deliver LO1 and LO2 concisely and successfully • Understand the requirements for the LO3 planning and carrying the interactions • Evidence and best practice when completing the witness statement
11.15am	Morning coffee
11.30am	Understanding the key factors of the optional units R023 to R031 <ul style="list-style-type: none"> • Requirements of optional units and the pros and cons of each • Selecting the best optional units for your students • The requirements for each mark band • How to avoid the common misconceptions and achieve success for your students • Sample assessment materials at Pass/Merit/Distinction • Applying assessment criteria to exemplar – discussion
12.30pm	Lunch
1.30pm	Learning Objectives / Assessment Criteria <ul style="list-style-type: none"> • Synoptic assessment – the requirements • Sample assessment materials at Pass/Merit/Distinction • Applying assessment criteria to exemplar – discussion
2.30pm	Afternoon tea
2.45pm	Understanding Unit R021 and the key issues <ul style="list-style-type: none"> • Structure and content • Command verbs and types of questions • The question requirements – improving your understanding • Differentiation between the banded response questions • Marking exercise – hands on! • Resources and support
3.45pm	Review and reflect
4.00pm	Course ends

BESPOKE IN-SCHOOL TRAINING

TAKE PART IN OUTSTANDING CPD WITHOUT LEAVING YOUR CENTRE

Is there a CPD workshop that you wish to attend but find it a struggle to leave the classroom? Or is there a particular area you are looking for support with? Why not 'host' an event or a more tailored workshop at your school on a day that suits you and your colleagues.

CUSTOMISED CONTENT ∞ PROFESSIONAL GUIDANCE ∞ VALUE FOR MONEY

∞ Simply tell us what topics you would like covered and we'll plan a cost-effective, bespoke workshop that runs in your centre and targets all of the key areas

∞ You can invite local schools along to help build new partnerships, swap ideas and share the costs with them

Simply enquire today and one of our CPD Support team will discuss your specific requirements and provide you with a free, no obligation quote.

ENQUIRE TODAY

 hoddereducation.co.uk/inschool
 events@hoddereducation.co.uk

 **01295 222777**
 **@HodderSchools**

HOW TO BOOK

 www.hoddereducation.co.uk/events  **01295 222777**  events@hoddereducation.co.uk

BOOKING FORM

Fill in the booking form below and return it via post or fax:

 **Hodder Education, Blenheim Court, George Street, Banbury, OX16 5BH**  **01295 222745**

Booking reference:

Delegate name(s):

Job title(s):

Email address*:

Establishment name:

Address:

Postcode:

Telephone:

Date:

Purchase order number:

Please specify any special dietary requirements (e.g. vegetarian, vegan, gluten free):

***We need your email address in order to send you information about your event. If you would also like to receive the latest news, free resources and discounts from Hodder Education, please sign up for eUpdates from the Hodder Education Group** by ticking this box** For full details of our Privacy Notice, please visit www.hoddereducation.co.uk/Privacy-Policy. You can unsubscribe at any time by clicking on the unsubscribe button in the eUpdates or by going online and managing your preferences.

****The Hodder Education Group consists of Hodder & Stoughton Limited, Rising Stars UK Limited and Galore Park Publishing Limited. Your data controller is Hodder & Stoughton Limited. We may pass information that you have given us to other companies within the Hachette UK Group of companies where our systems are shared. These companies will include our parent company, Hachette UK Limited, their parent company and all of the subsidiaries of these respective companies (the "Group").**

Once your booking has been made (subject to availability), you will receive confirmation via email of your place, a full VAT invoice will then be posted to you. Final details are emailed approximately 2 weeks before the date of the event. Our full Terms and Conditions are available on our website.

A cancellation charge of £80 plus VAT will be incurred for any booking cancelled less than 3 weeks before the date of the event. The full fee is payable if you cancel within 7 days of the event or do not attend.